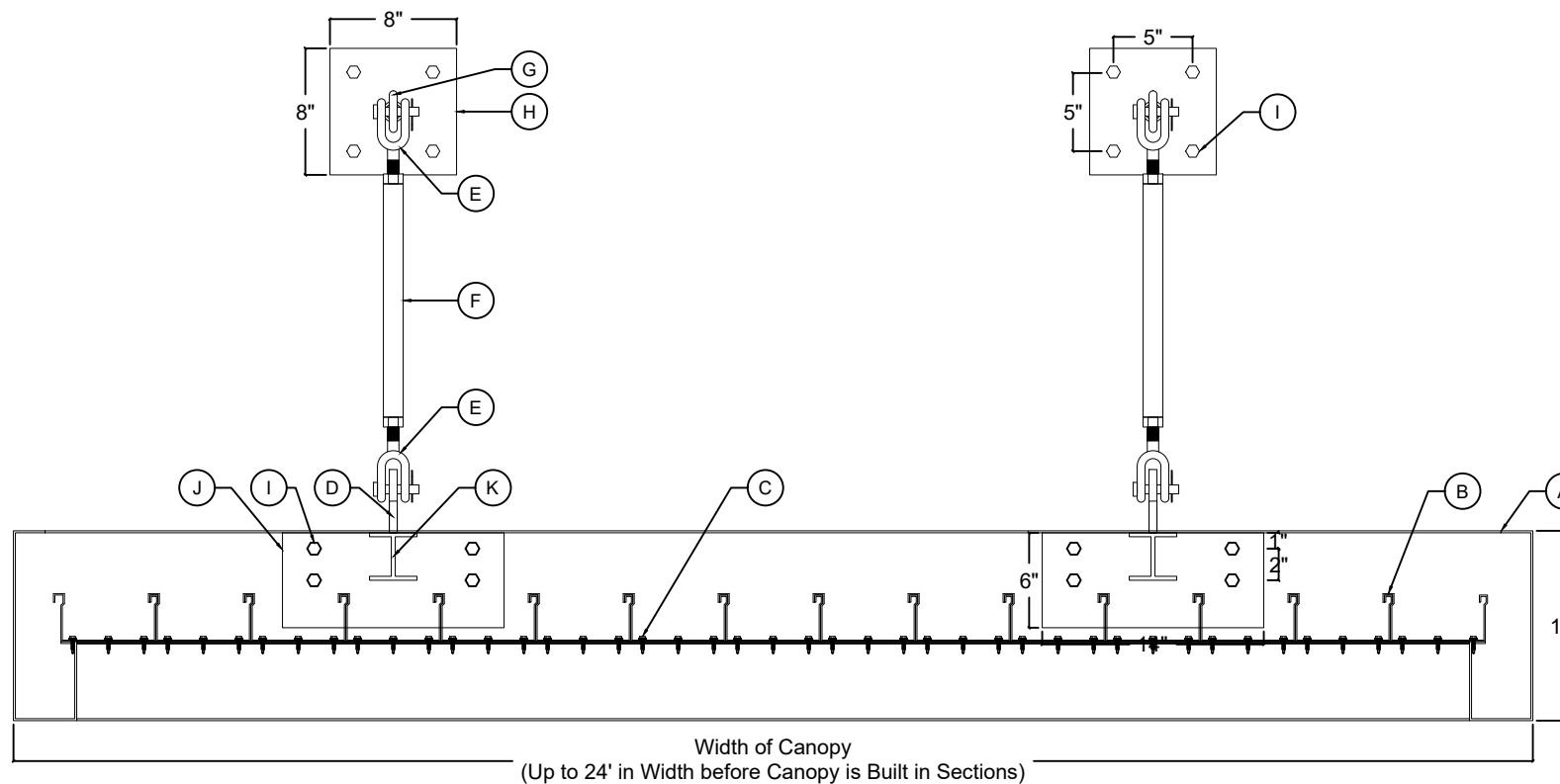
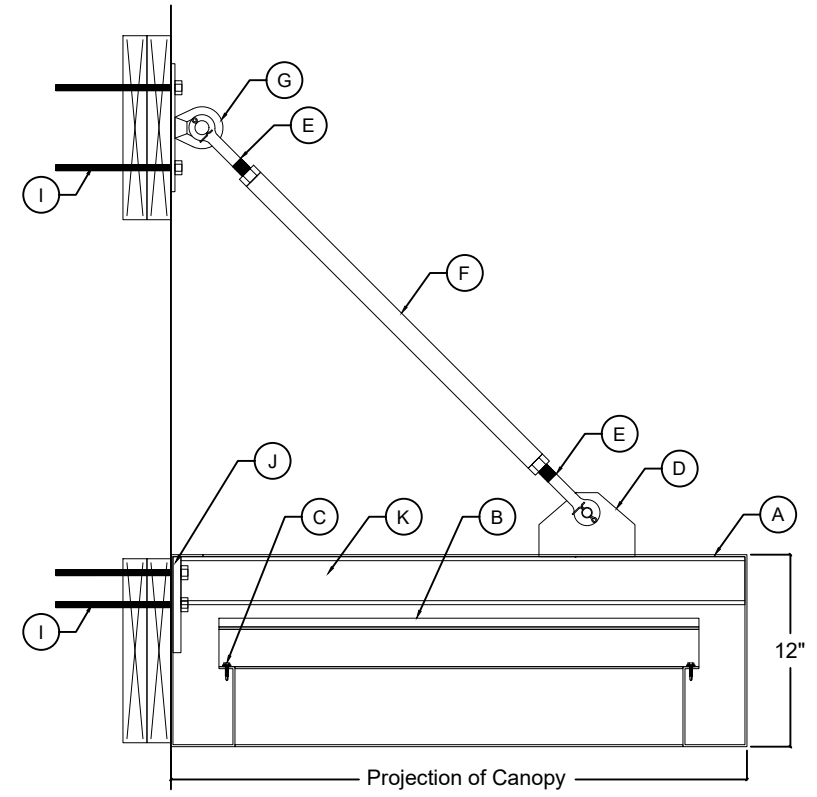


**1 TOP VIEW**  
SCALE: 1" = 1'-0"



**2 TRANSVERSE VIEW**  
SCALE: 1" = 1'-0"



**3 PROFILE**  
SCALE: 1" = 1'-0"

CANOPY FABRICATION DETAILS	
PART LABEL	DESCRIPTION
A	12"(h) x 4"(w) x 1/8"(thick) ALUMINUM FLAT-FACE GUTTER EXTRUSION
B	3"(h) x 6"(w) x 1/8"(thick) EXTRUDED ALUMINUM INDIVIDUAL SELF-MATING DECK-PANS / TOP-GUTTERS
C	#10 X 1" HEX-HEAD TEK-SCREWS WITH RUBBER WASHERS
D	4"(h) x 6"(w) x 1/2"(thick) ALUMINUM PLATE SUPPORT KNUCKLES
E	1/2"(thick) STEEL CLEVIS   1/2" LOCKING PIN   PRE-WELDED 3/4"(thick) THREADED-ROD
F	1-1/4" SCH40 PIPE WITH PRE-WELDED NUTS
G	1/2"(thick) ALUMINUM "D-RING" EYENUT
H	8" x 8" x 1/4"(thick) ALUMINUM TOP-MOUNTING "ESCUTCHEON" PLATES
I	3/8" LAG BOLTS
J	6"(h) x 14"(w) x 1/2"(thick) ALUMINUM BOTTOM MOUNTING PLATES (WELDED TO I-BEAM SUPPORTS)
K	3" x 3" ALUMINUM I-BEAM SUPPORTS (WELDED TO MOUNTING PLATES & CANOPY FRAME)

**STANDARD ARCHITECTURAL CANOPY | 12"(h) x 4"(w) GUTTER EXTRUSION**  
**TURNBUCKLE-SUPPORTS MOUNTING SYSTEM**

